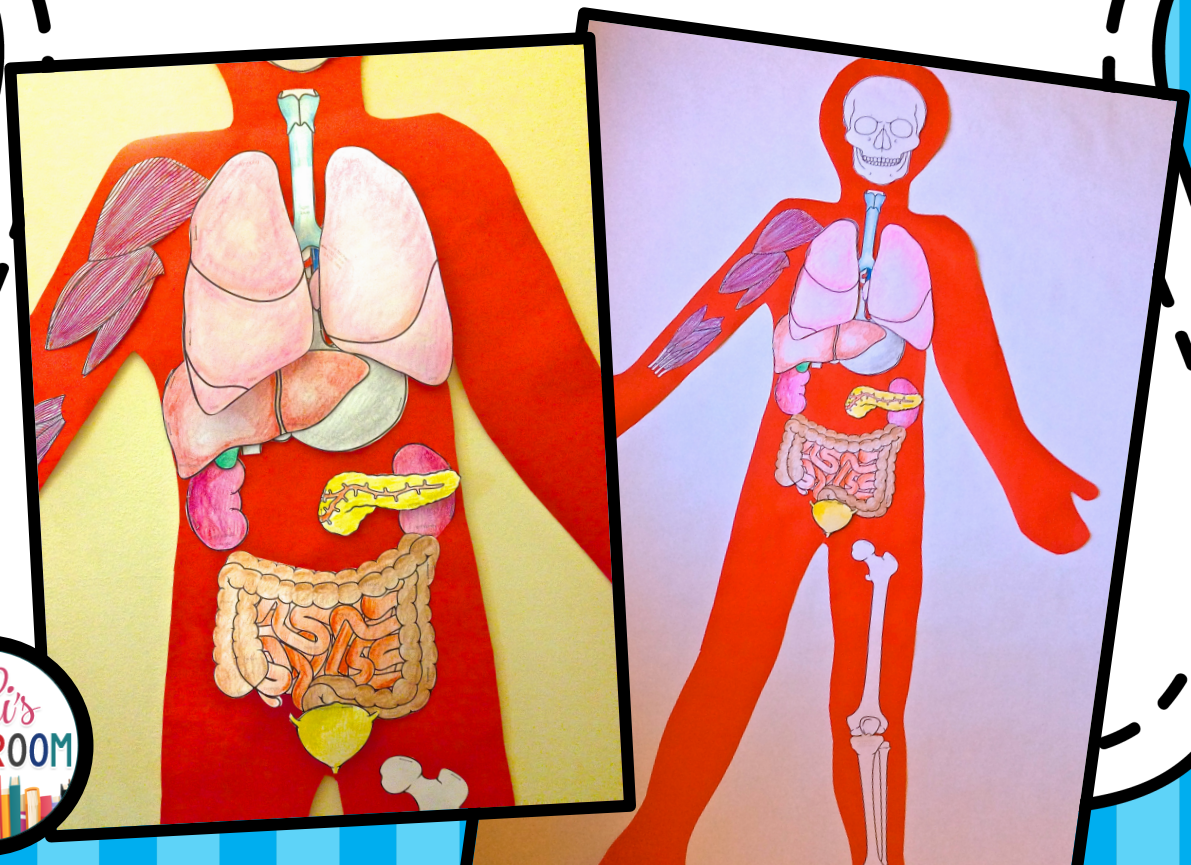


The Life-Size Human Body Model: Build It!

©2015 Kiki's Classroom

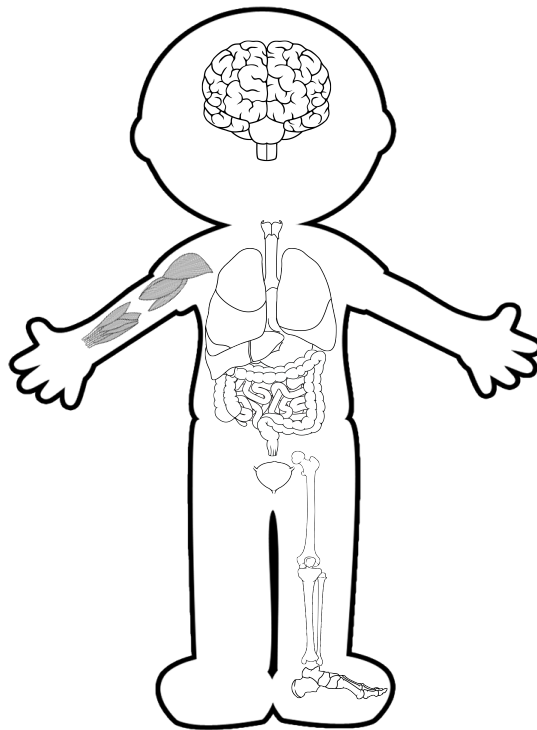


Ready to
print
packets for
your kids?

Print pages
3 to 8!

Our Amazing Human Body: Build It!

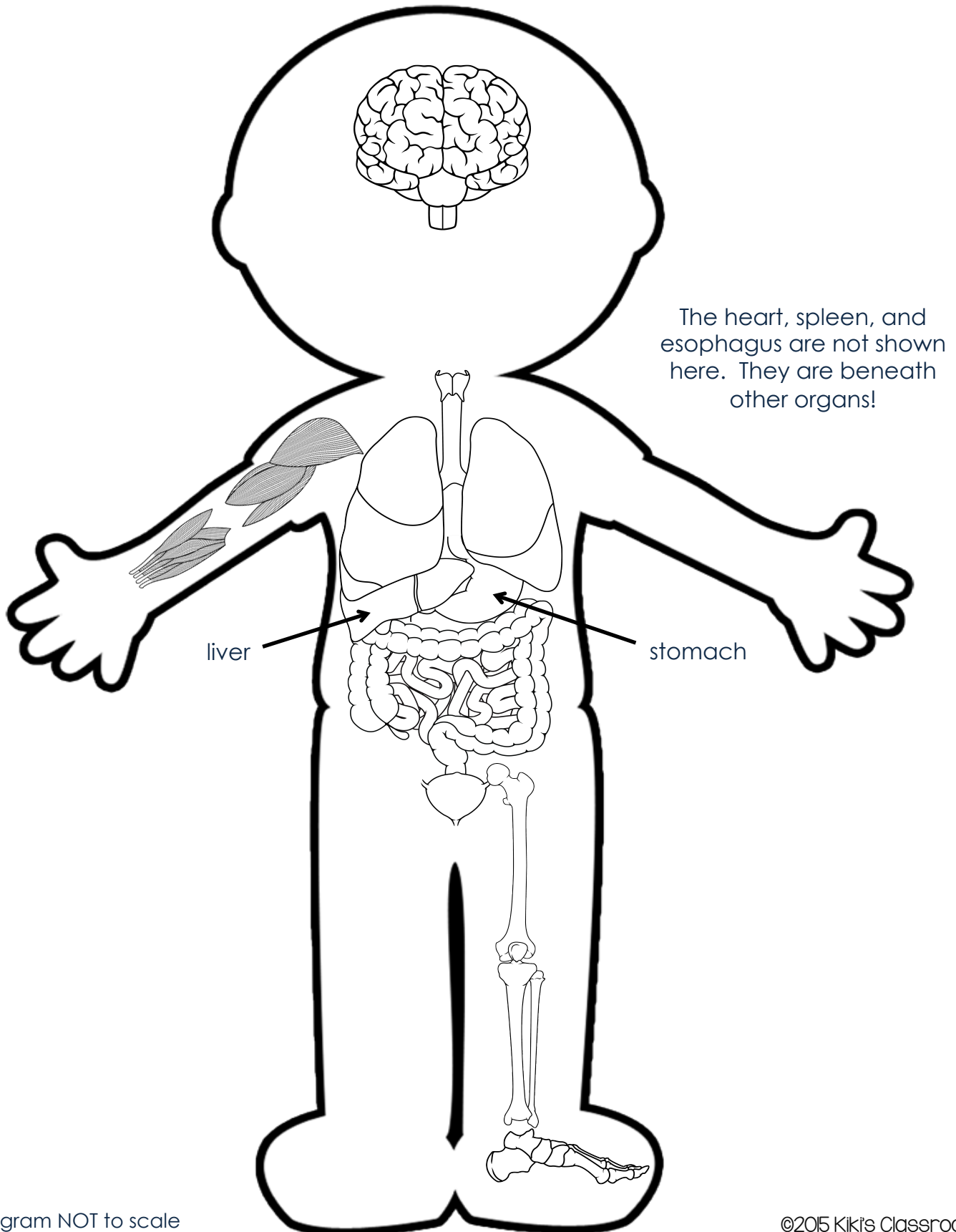
©2015 Kiki's Classroom



Name _____

Assembly Diagram*

Your life-size human body will look like this before you add the ribcage in the last step.

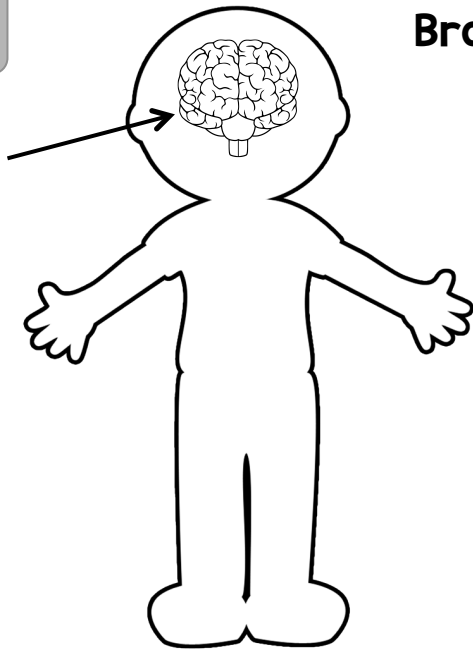


* Diagram NOT to scale

©2015 Kiki's Classroom

1

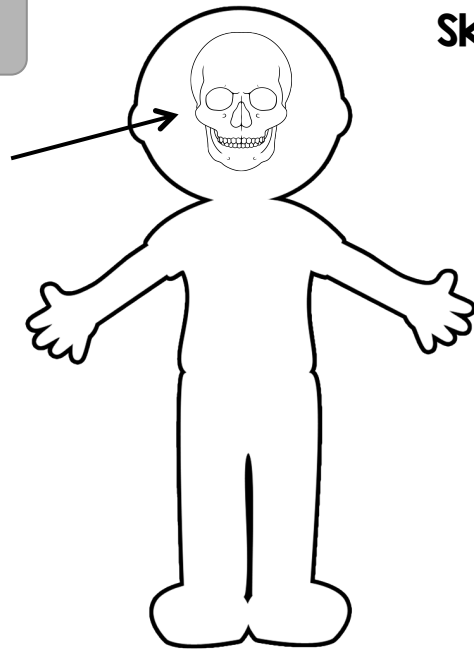
Brain



Once the cover flap is stapled to your writing, glue the **brain** to your body outline, here. Put glue on the back of the piece that has your writing on it. Leave some room above the top of your brain. You will attach the skull there.

2

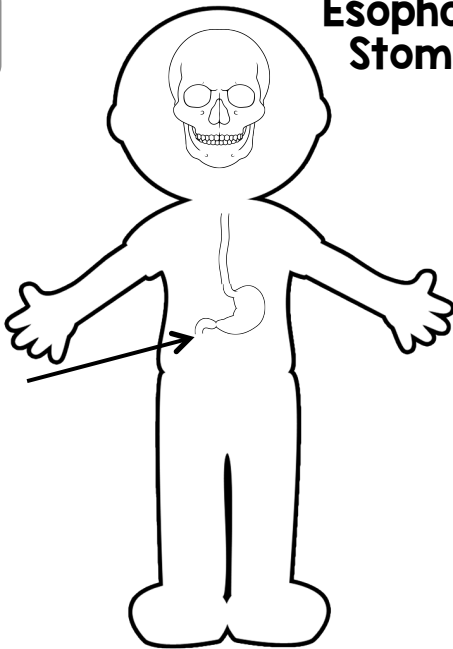
Skull



Glue the **skull** to your body outline, here. Put glue on the TOP EDGE only, and attach the top edge of the skull ABOVE the top edge of the brain.

3

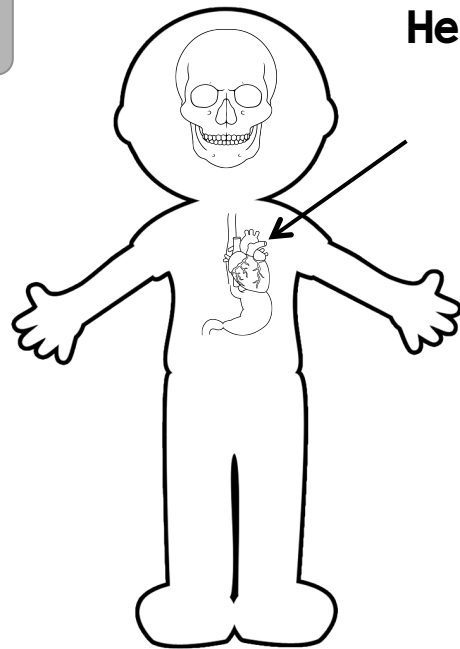
Esophagus/ Stomach



Now attach the **esophagus** and **stomach** to your body outline, here. Put glue ONLY ON THE BACK OF THE ESOPHAGUS. The stomach will not be attached to the body.

4

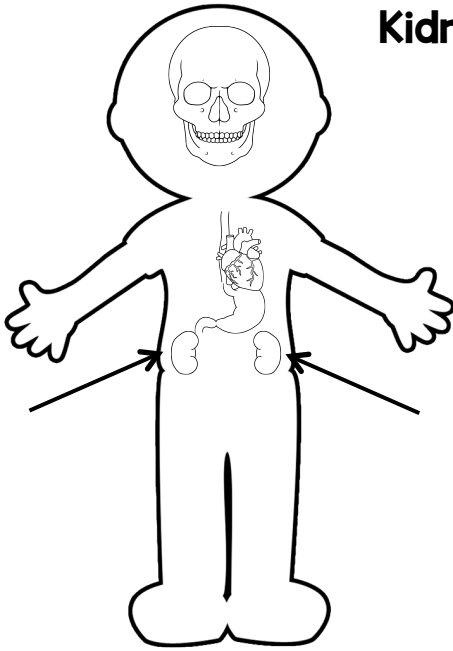
Heart



Once assembled, glue the **heart** just above your stomach, a little to the body's left side. Part of the heart will overlap the esophagus.

5

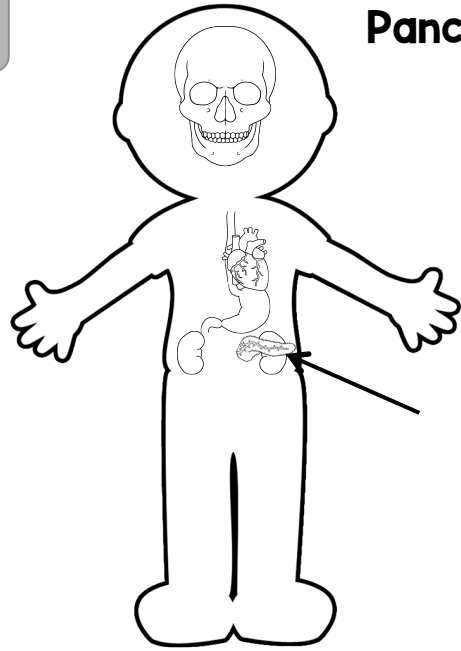
Kidneys



Once the cover flap is stapled to your writing, glue the **kidneys** to your body outline, here. They are located just below the bottom of your stomach. Put glue on the back of the pieces that have your writing on them.

6

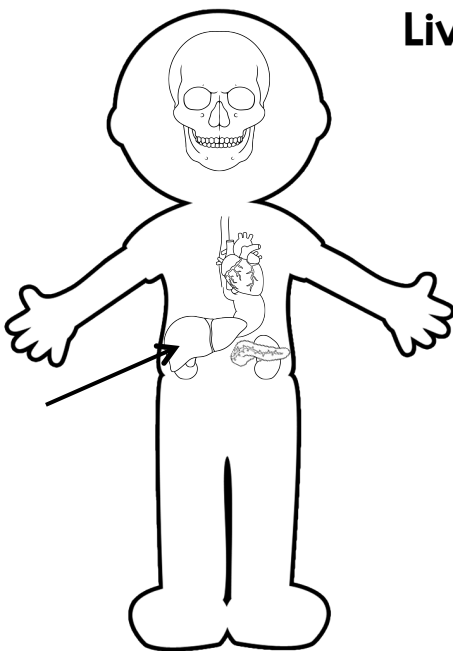
Pancreas



Once the cover flap is stapled to your writing, glue the **pancreas** to your body outline, here. It will cover part of the left kidney. Put glue **ONLY ON THE MIDDLE** on the back of this piece. You can lift up the ends to see the organs beneath it.

7

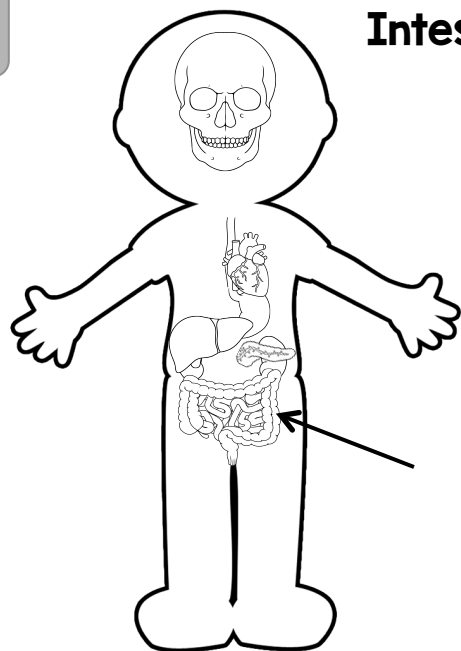
Liver



Once the cover flap is stapled to your writing, glue the **liver** to your body outline, here. You should still be able to see some of the right kidney. It will also touch the stomach. Put glue **ONLY** on the **OUTER EDGE** of the liver (near the outside of your body outline) so you can lift the liver to see the organs underneath.

8

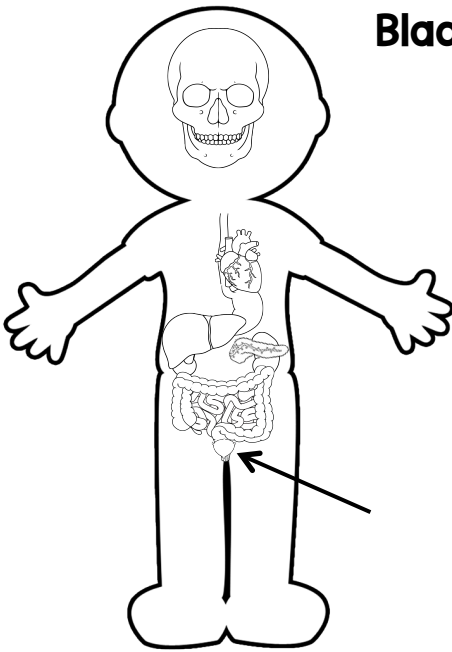
Intestines



Once the cover flap is stapled to your writing, glue the **intestines** to your body outline, here. Put glue on the back of the piece that has your writing on it.

9

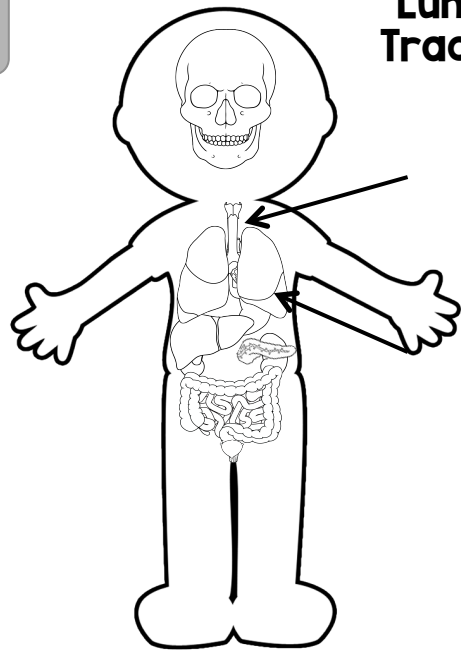
Bladder



Once the cover flap is stapled to your writing, glue the **bladder** to your body outline, here. Put glue on the TOP EDGE on the back of the piece that has your writing on it. The bladder will cover the end of the large intestine. You should be able to lift up both bladder pieces to see the intestine underneath.

10

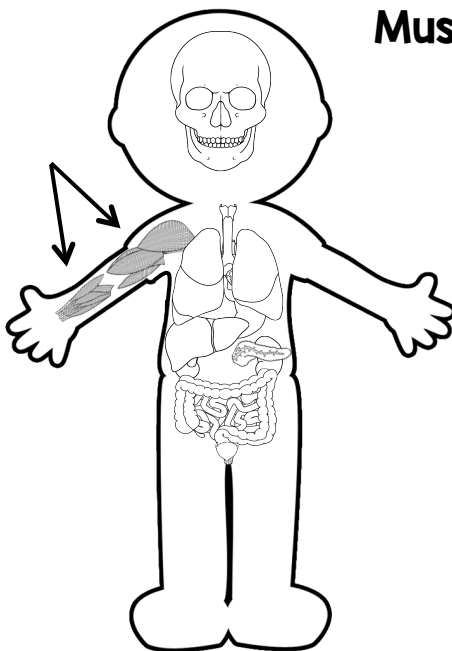
Lungs/Trachea



The **trachea** should already be attached to both lungs. Glue the **trachea** and **lungs** to your body outline, here. Glue ONLY under the very top of the trachea. The rest of the trachea and lungs will not be glued to the body.

11

Muscles

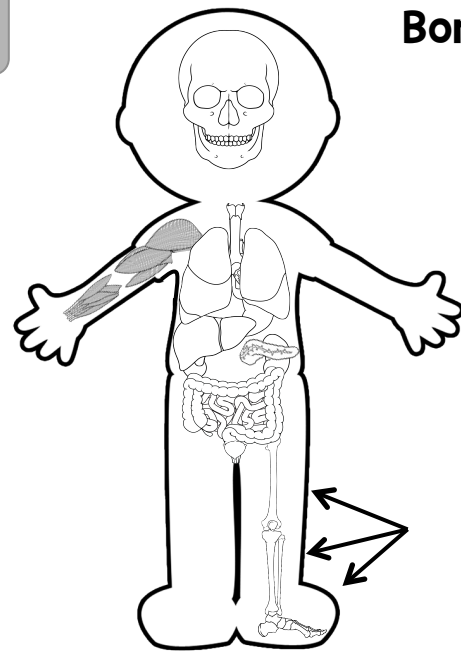


Once the cover flap is stapled to your writing, glue the **muscles** to your body outline, here. Put glue on the back of the piece that has your writing on it.

Glue the **lower arm muscles** to your body outline, here. There is no writing piece for these muscles.

12

Bones

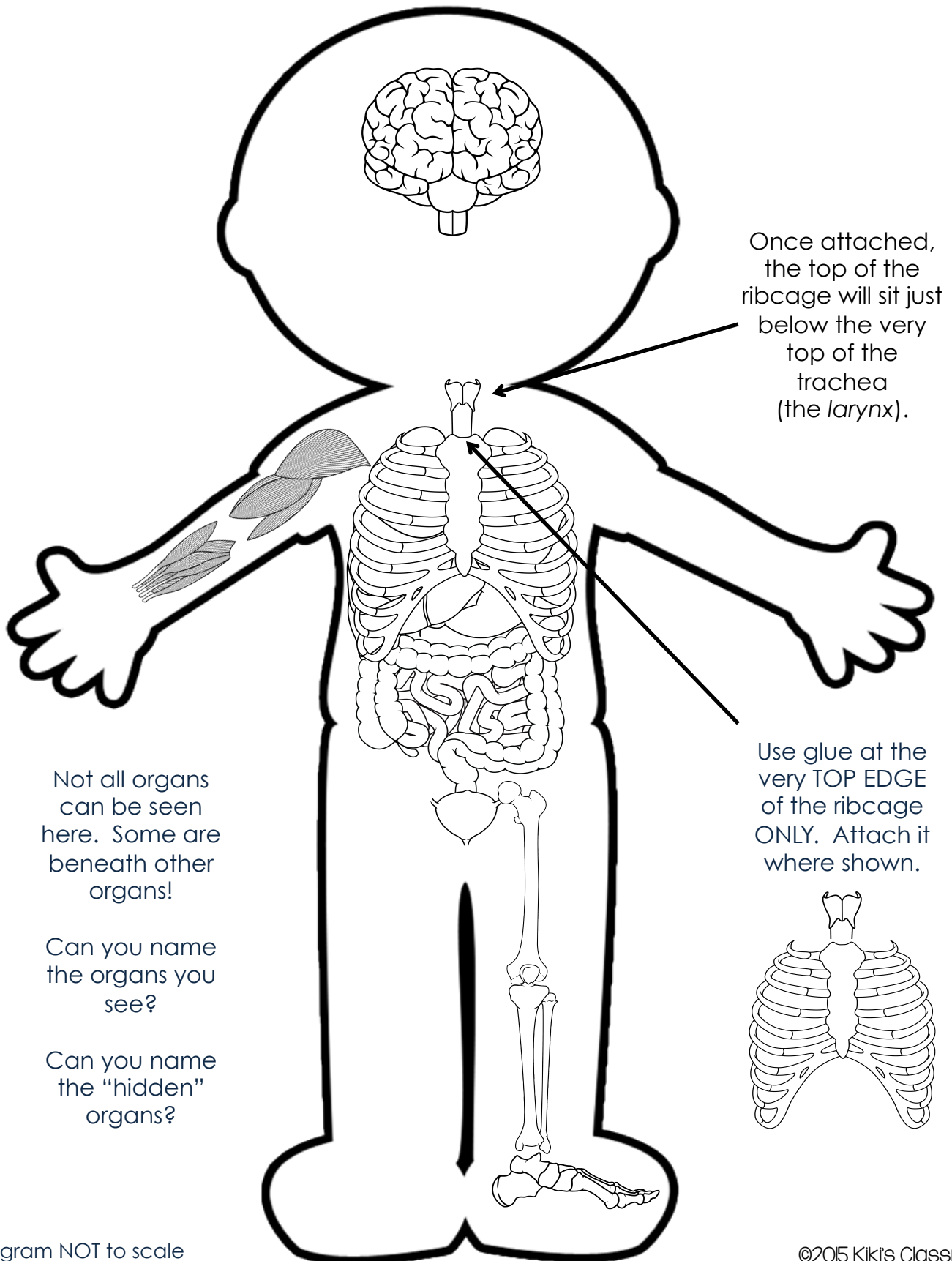


Once the cover flap is stapled to your writing, glue the **bones** to your body outline, here. Put glue on the back of the piece that has your writing on it. Glue the **lower leg bones** and **foot bones** as shown.

See the next page to attach the ribcage.

Assembly Diagram*

The final assembly should look like this:

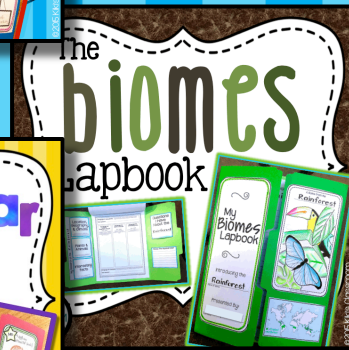
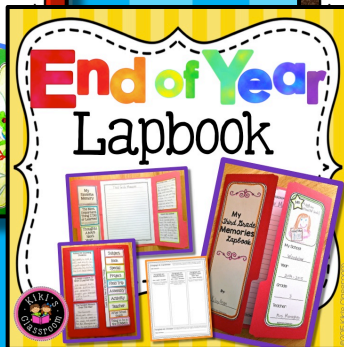
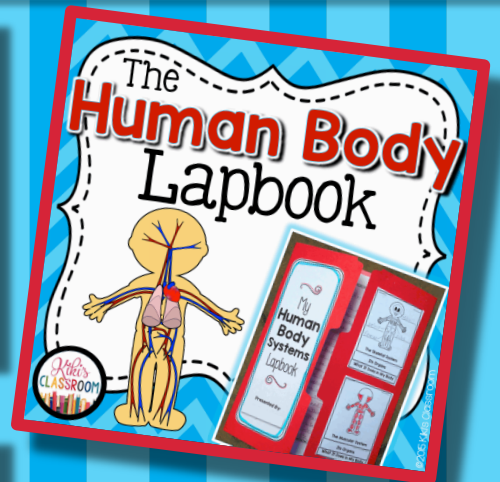
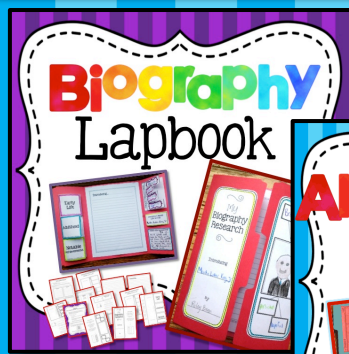


* Diagram NOT to scale

©2015 Kiki's Classroom

Have you tried **LAPBOOKS** for structured writing?

Explore the possibilities in Kiki's Classroom on TpT:



...new topics
added often!



©2015 Kiki's Classroom

Thank you!

Created by Krista Bean ©2015

Thank you for your purchase!

This product is for the purchaser's use in one classroom only, and should not be copied or redistributed to others. If you have questions or concerns about this product, please contact me so that I can improve it. If you are pleased with this product, please follow my store and leave positive feedback here:

<http://www.teacherspayteachers.com/Store/Kikis-Classroom>

Email me at kikiclassroom@att.net

Graphics:

The AMAZING organ clips in this pack were created by special request, by the talented **Blue Bees Workshop**:

<https://www.teacherspayteachers.com/Store/Blue-Bees-Workshop>



Other Graphics by:

Graphics by Messare Clips & Design

<https://www.teacherspayteachers.com/Store/Messare-Clips-And-Design>



Teacher's Clipart <https://www.teacherspayteachers.com/Store/Teachers-Clipart>
Kelly Benefield <https://www.teacherspayteachers.com/Store/Kelly-Benefield>

Fonts:

Kimberly Geswein Fonts

<http://www.teacherspayteachers.com/Store/Kimberly-Geswein-Fonts>

KB3Teach <https://www.teacherspayteachers.com/Store/Kb3teach>

I hope you'll visit [Kiki's Classroom](http://www.teacherspayteachers.com/Store/Kikis-Classroom) again soon!

